



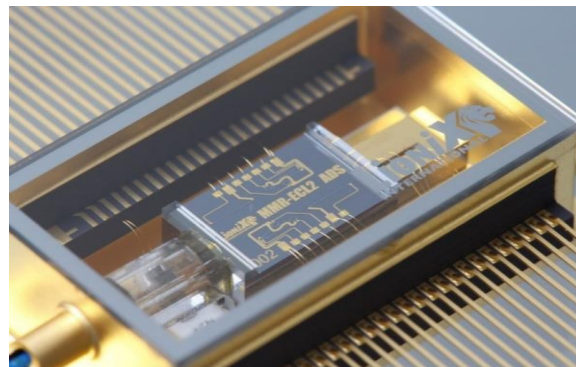
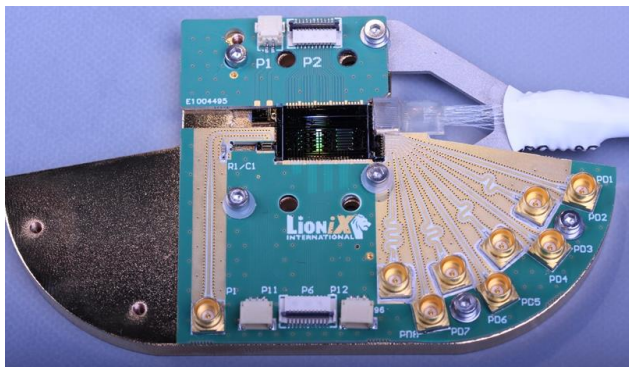
Our chips drive your business

www.lionix-international.com

- Providing **customized solutions** for OEM's and System Integrators
- From design to device by **vertical integration** in **scalable production volumes**
- Maintaining technology leadership secured by **strong IP position**

Customized Microsystem Solutions	
Integrated Photonic	
Customized MEMS	
(Opto) Fluidics	

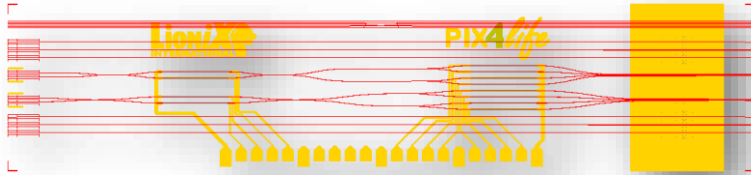
Photonic IC Modules



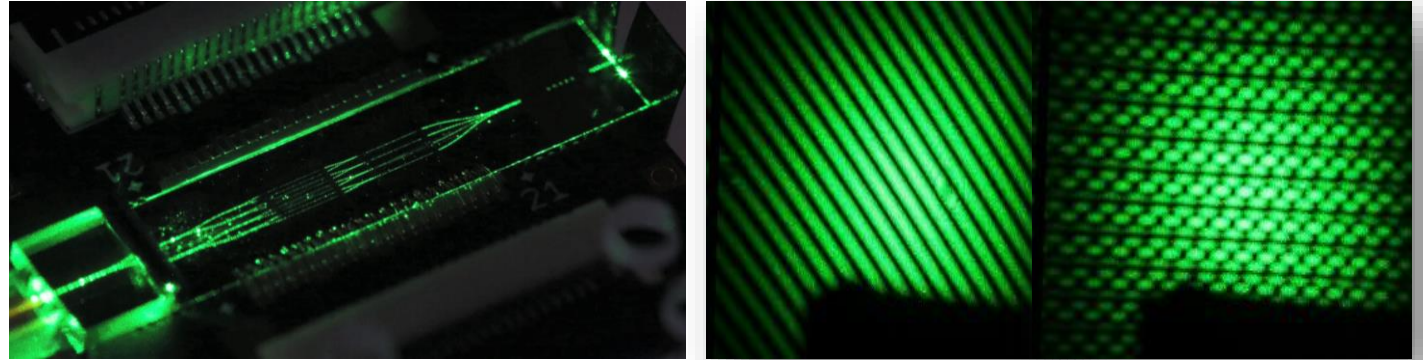
Photonic IC technologies

- Low loss TriPleX waveguide (silicon nitride)
- Operates from 400nm to 2350nm
- Waveguide tapering for mode optimization
- Hybrid assembly with semiconductor material
- Assembly & packaging into PIC module

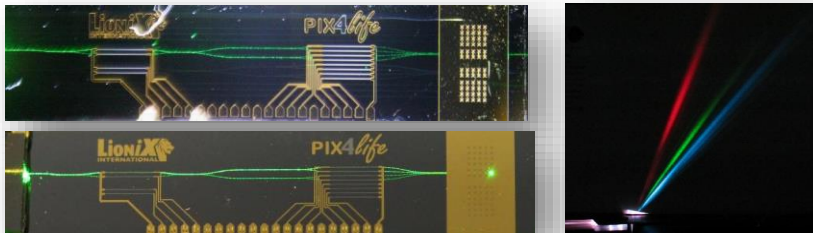
On chip integration of functions



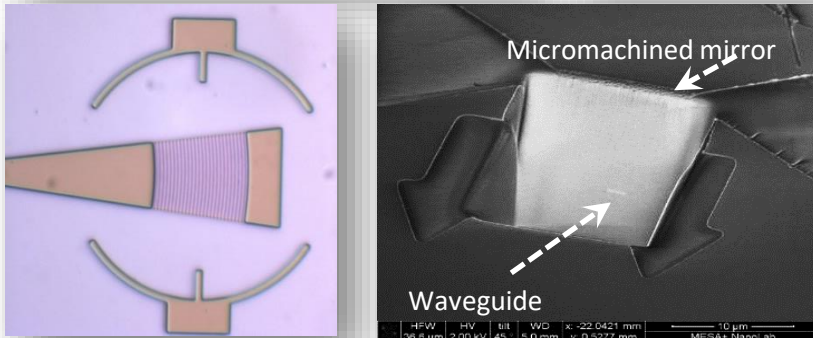
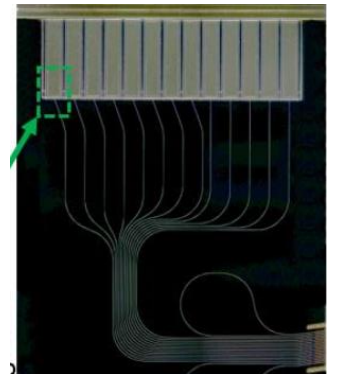
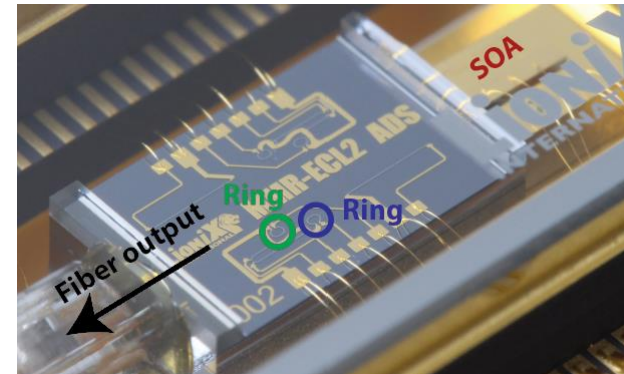
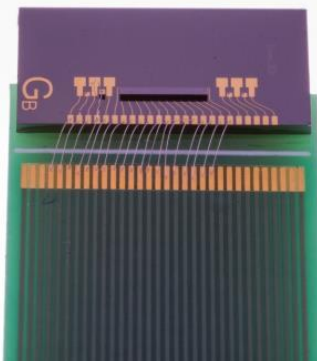
Interference of multiple outputs – tunable/steerable/adaptive



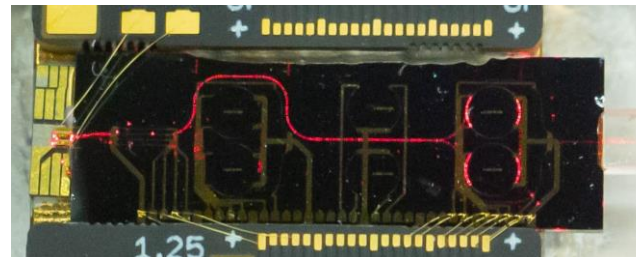
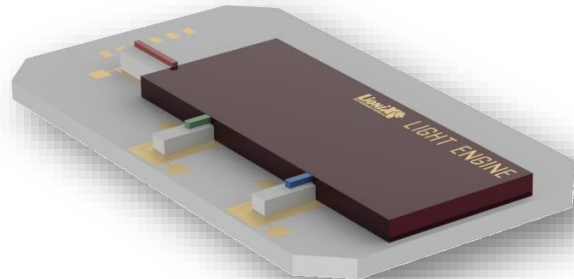
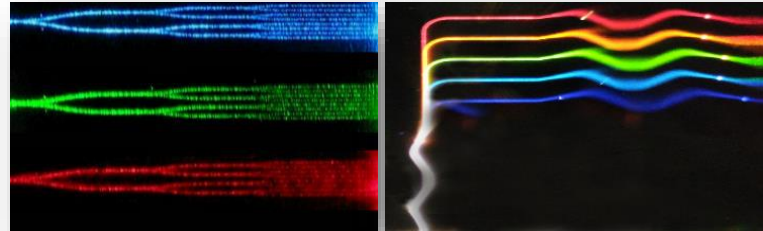
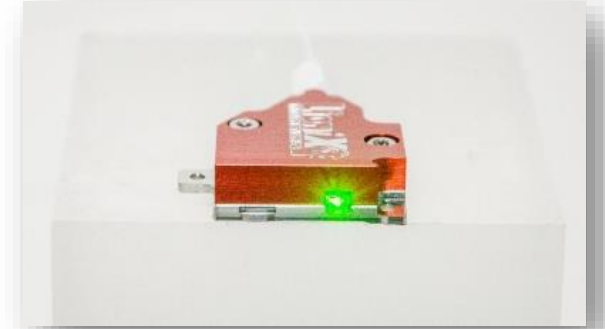
Outputs accurately beam shaped



Integrated laser source and detector



- Issues from OEMs, system integrators
 - System size, mode properties, robustness, integration ; Manipulation of light
- Ideas from application developers
 - Structured light
 - Metrology
 - Optical Phased Arrays
 - Microscopy
 - AR/VR
 - ..



courtesy LPNO University Twente

RGB Light Engine

680nm narrow linewidth tunable laser

Your idea!