

# Sensirion Company Presentation – EPIC Online Env. Monitoring

Dr. Martin Winger, R&D Sensor Innovation  
Stäfa, 2020-06-15

## Who We Are

- Spin-off from ETH Zürich, founded in 1998.
- We are global market and technology leader in environmental and flow sensing.
- Headquartered in Stäfa, Switzerland
- ~800 FTEs, 170 MCHF revenue in 2019

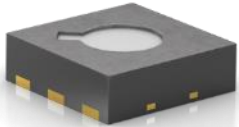
**SENSIRION**  
THE SENSOR COMPANY

# Sensirion Product Lines

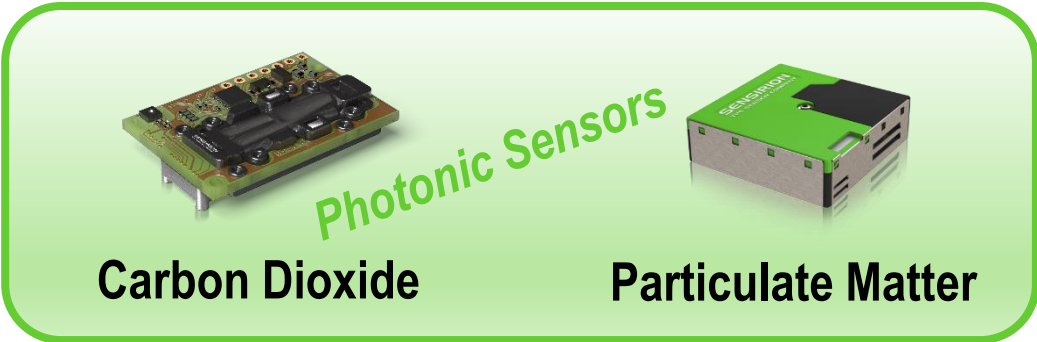
## Environmental Sensors and Modules



**Humidity & Temperature**



**VOCs**



**Carbon Dioxide**

**Particulate Matter**

## Flow Sensors and Modules



**Natural Gas**



**Differential Pressure**



**Liquid Flow**

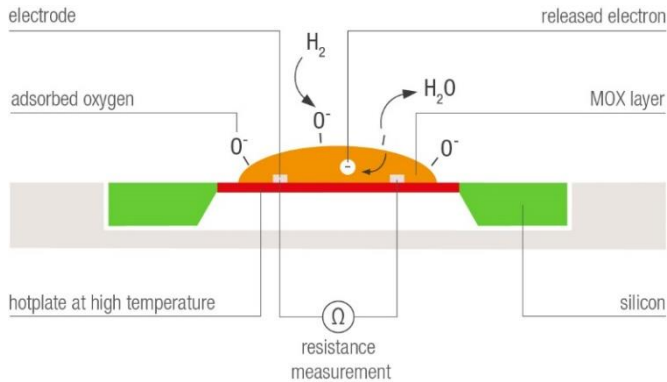
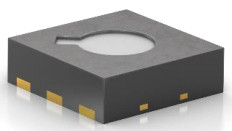


**Mass Flow**

# Sensirion Gas Sensing Portfolio

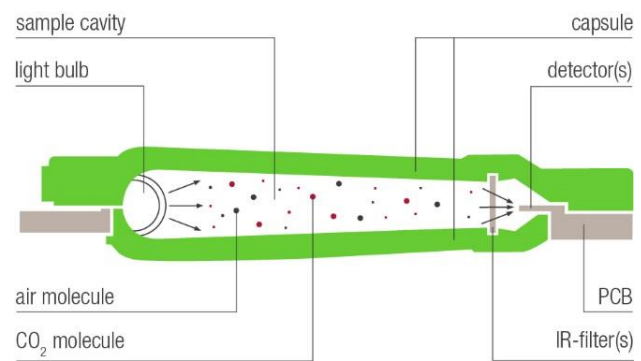
## SGP3x / SGP4x – VOC

- MOx nanoparticles on MEMS-integrated hotplate (MOXSens®)
- Calibrated indoor air quality signals
- Total VOC output
- H<sub>2</sub>-based CO<sub>2</sub> equivalent output



## SCD30 – 1<sup>st</sup> generation CO<sub>2</sub>

- Dual-channel NDIR sensor module
- Broadband light source
- Inhouse CMOSens® IR detector
- Output of CO<sub>2</sub>, RH, and T

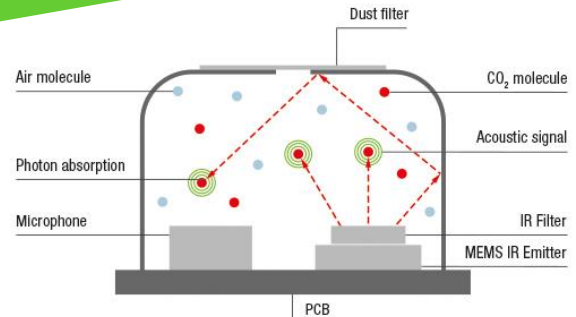


## SCD40 – 2<sup>nd</sup> generation CO<sub>2</sub>

- Photoacoustic principle (PASens®)
- Inhouse MEMS IR emitter
- Fully reflow solderable



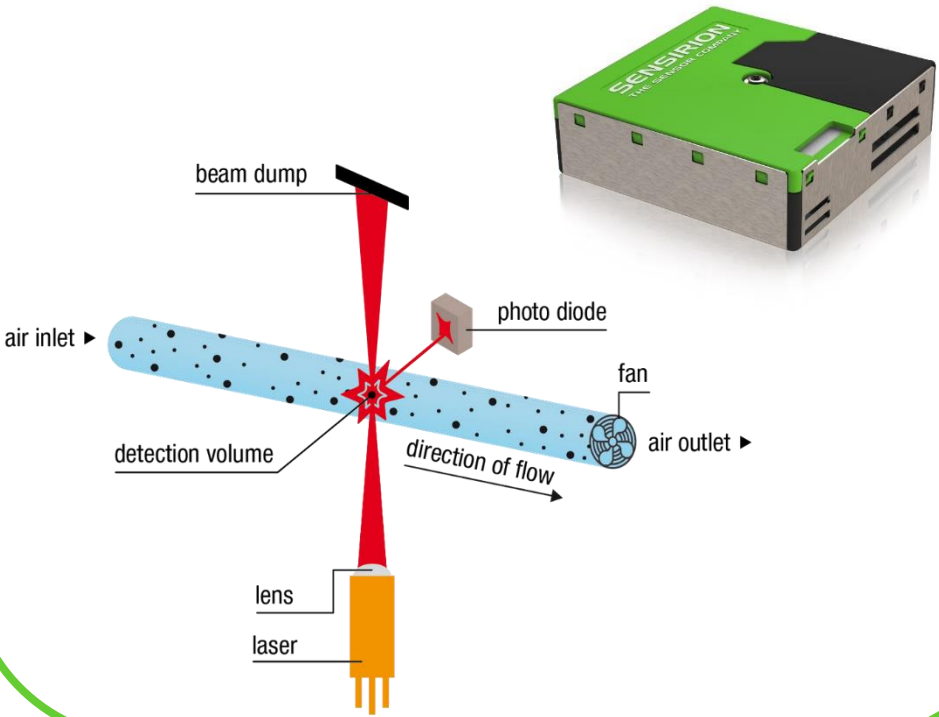
To be released late 2020



# Sensirion Particulate Matter Portfolio

## SPS30 – PM2.5

- Detect particles with diameters up to 2.5um
- Laser-scattering based measurement principle
- Proprietary contamination-resistance technology and long-lasting components



## Nubo – Sensirion’s Smart City Node

- Measurement of outdoor air quality for smart cities
- PM2.5, RH, T
- 4G-connectivity, worldwide plug'n'play
- Straightforward maintenance



# SENSIRION

THE SENSOR COMPANY

[www.sensirion.com](http://www.sensirion.com)