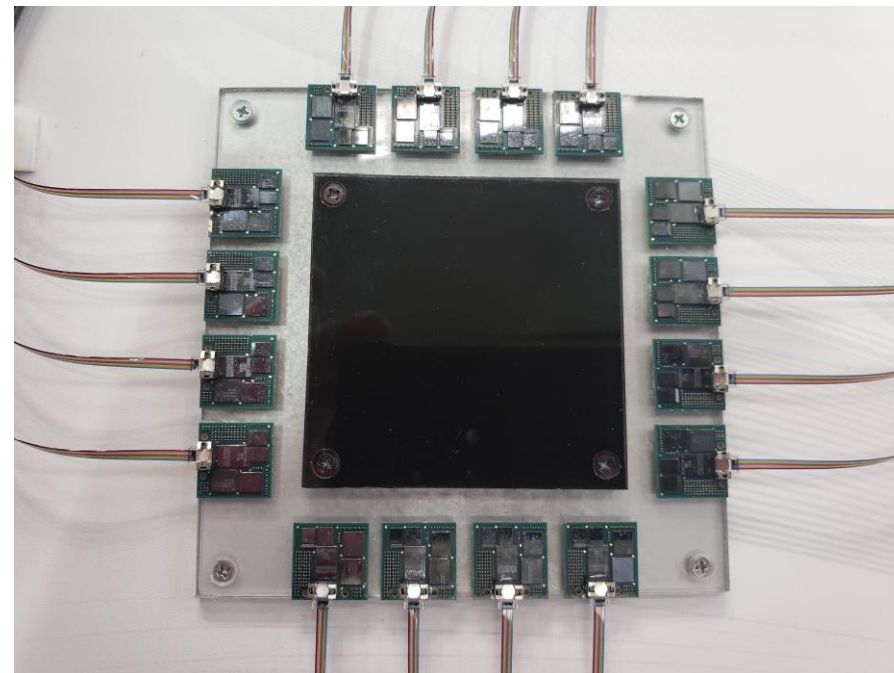
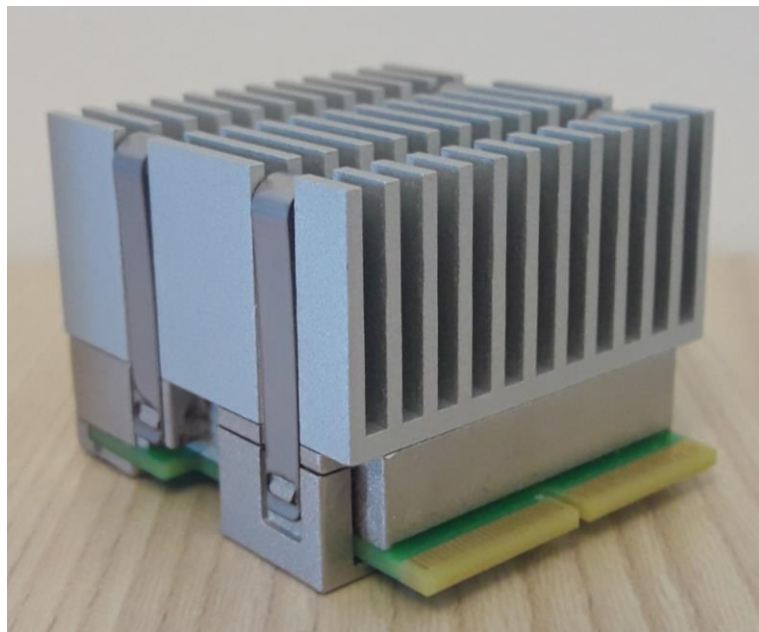


New Pluggable Transceivers

Brad Booth
Director, Next Cloud System Architecture
Azure Hardware Systems & Infrastructure



What is Pluggable?



Considerations

Reliability

- Signal integrity performance
- Redundancy

Power requirement

- Intra-rack or –row vs. DCI vs. terrestrial/subsea
- Process node progression

Thermal

- Quantity of heat generated and thermal gradient
- Method of heat dissipation

Swiss Army Knife or Toolkit



[This Photo](#) by Unknown Author is licensed under [CC BY-SA](#)

