



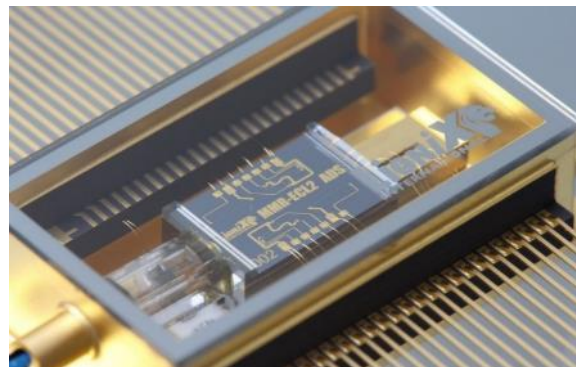
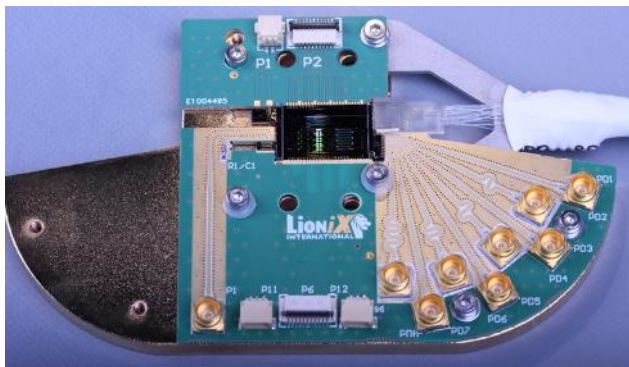
Our chips drive your business

www.lionix-international.com

- Providing **customized solutions** for OEM's and System Integrators
- From design to device by **vertical integration** in **scalable production volumes**
- Maintaining technology leadership secured by **strong IP position**

Customized Microsystem Solutions	
Integrated Photonic	
Customized MEMS	
(Opto) Fluidics	

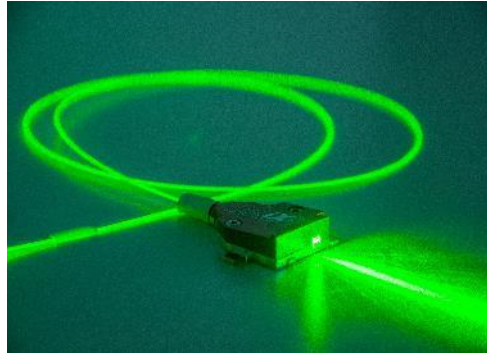
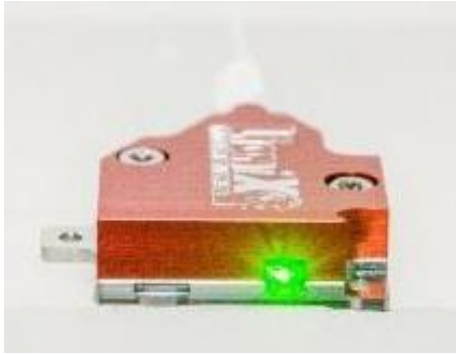
Photonic IC Modules



Photonic IC technologies

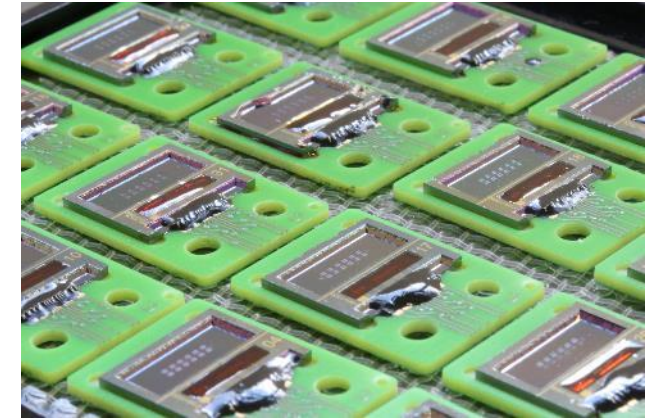
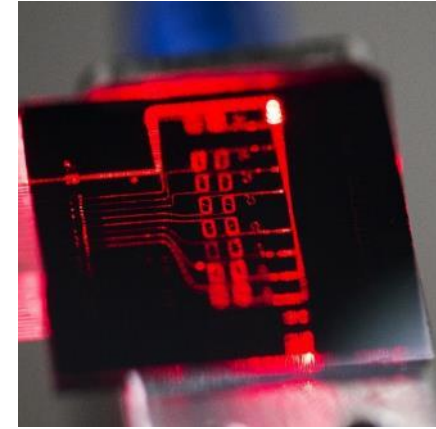
- **Low loss TriPleX waveguide (silicon nitride)**
- **Operates from 400nm to 2350nm**
- **Waveguide tapering for mode optimization**
- **Hybrid assembly with semiconductor material**
- **Assembly & packaging into PIC module**

DNA sequencer



- **Sensor instrumentation**
- **300mW 532nm fiber coupled laser**
- **End-capped endfacet**
- **1xN splitter < 2% accuracy**
- **Plug and play install**

Photonic Biosensor



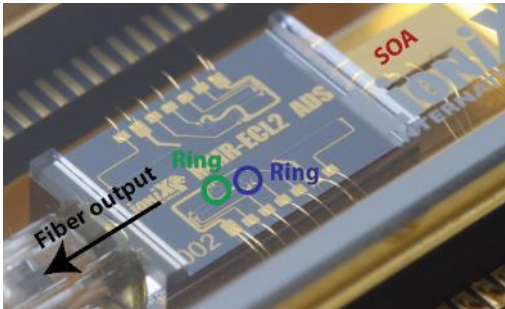
- **Multi channels simultaneously.**
- **Selective surface modification**
- **Specific chemistry for virus or DNA**
- **Integration with VCSEL and detector**

SURFIX
nano coatings > global impact

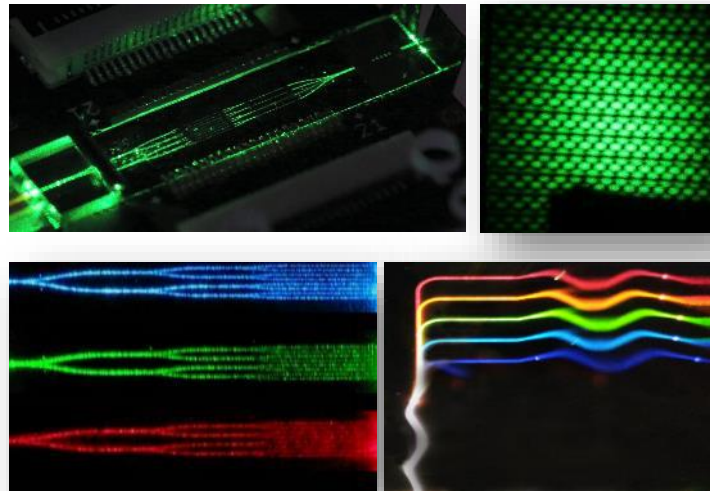
QURIN
DIAGNOSTICS

PhotonDelta
Gateway to Integrated Photonics

- Issues/challenges from OEMs, system integrators and sensing application
 - System size, mode properties, robustness, integration ; Manipulation of light
- Ideas from application developers
 - Industrial sensing
 - Metrology
 - Bio sensing
 - ..



Narrow linewidth tunable laser



Spectrometry & structured light



Your idea!